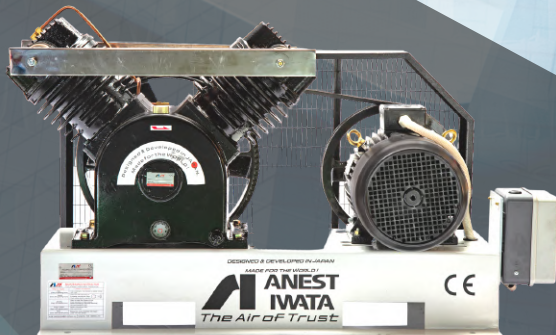


*“DESIGNED AND DEVELOPED IN JAPAN  
MADE FOR THE WORLD”*

# Lubricated Reciprocating Vacuum Pump

**Next Generation  
Technology.**





## Anest Iwata Motherson

Anest Iwata Motherson (AIM) is a joint venture between Anest Iwata Corporation, Japan and Motherson Group, India. Anest Iwata Corporation is one of the global leaders in Air Compressors and Vacuum Pumps with more than 9 decades of inspiring history of technological excellence.

Anest Iwata Motherson is committed to delight its customers by ensuring supply of the best quality products, supported with effective after sales services at optimum value. The company has two state-of-the-art manufacturing facilities and a wide network of sales and service centres spread across India.

## Salient Features

- Cast iron design for durability and long life
- Specially designed Stainless Steel Manifold
- Low noise - Ideal for Hospital applications
- Higher efficiency resulting in power saving
- Low oil carry over and low maintenance cost
- Compact and easy to install - No foundation required
- Special honing of cylinders resulting in low friction between cylinders and pistons

## Major Applications

Hospitals

Laboratories

Food Processing

Packaging

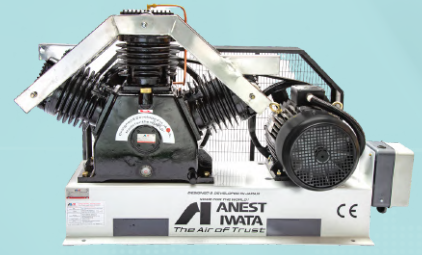
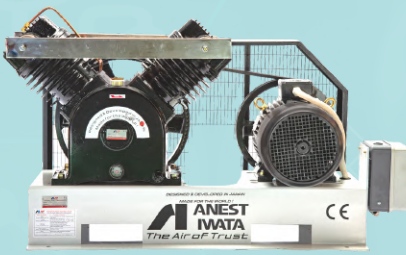
Dairy

Dental

Paper & Printing



## Technical Specifications



### Base Mounted

Model	No. of Cylinders	Piston Displacement		Vacuum (Hg)		Power		Dimensions	Weight (Approx)	Outlet Size
		LPM	CFM	Inch	mm	hp	Kw	L x W x H (mm)	Kg	(Inch)
BVLS 20DE (A)	2	984	35	29.4	745	2	1.5	1200 x 570 x 615	115	1"
BVLS 30DE (A)	2	1135	40	29.4	745	3	2.2	1200 x 570 x 615	125	1"
BVLS 50DE (A)	2	1707	60.3	29.4	745	5	3.7	1200 x 570 x 615	185	1"
BVLS 75DE (A)	2	3141	111	29.4	745	7.5	5.6	1275 x 605 x 705	220	1 - 1/2"
BVLS 100DE (A)	3	4320	152.6	29.4	745	10	7.4	1375 x 605 x 800	260	1 - 1/2"

### Tank Mounted

Model	No. of Cylinders	Piston Displacement		Vacuum (Hg)		Power		Tank Size	Dimensions	Weight (Approx)	Outlet Size
		LPM	CFM	Inch	mm	hp	Kw	Liters	L x W x H (mm)	Kg	(Inch)
TVLS 20D - 28E	2	984	35	29.4	745	2	1.5	280	1560 x 565 x 1115	260	1"
TVLS 20D - 50E	2	984	35	29.4	745	2	1.5	500	1860 x 670 x 1250	325	1"
TVLS 30D - 28E	2	1135	40	29.4	745	3	2.2	280	1560 x 565 x 1115	265	1"
TVLS 30D - 50E	2	1135	40	29.4	745	3	2.2	500	1860 x 670 x 1250	330	1"
TVLS 50D - 28E	2	1707	60.3	29.4	745	5	3.7	280	1560 x 565 x 1115	280	1"
TVLS 50D - 50E	2	1707	60.3	29.4	745	5	3.7	500	1860 x 670 x 1250	345	1"

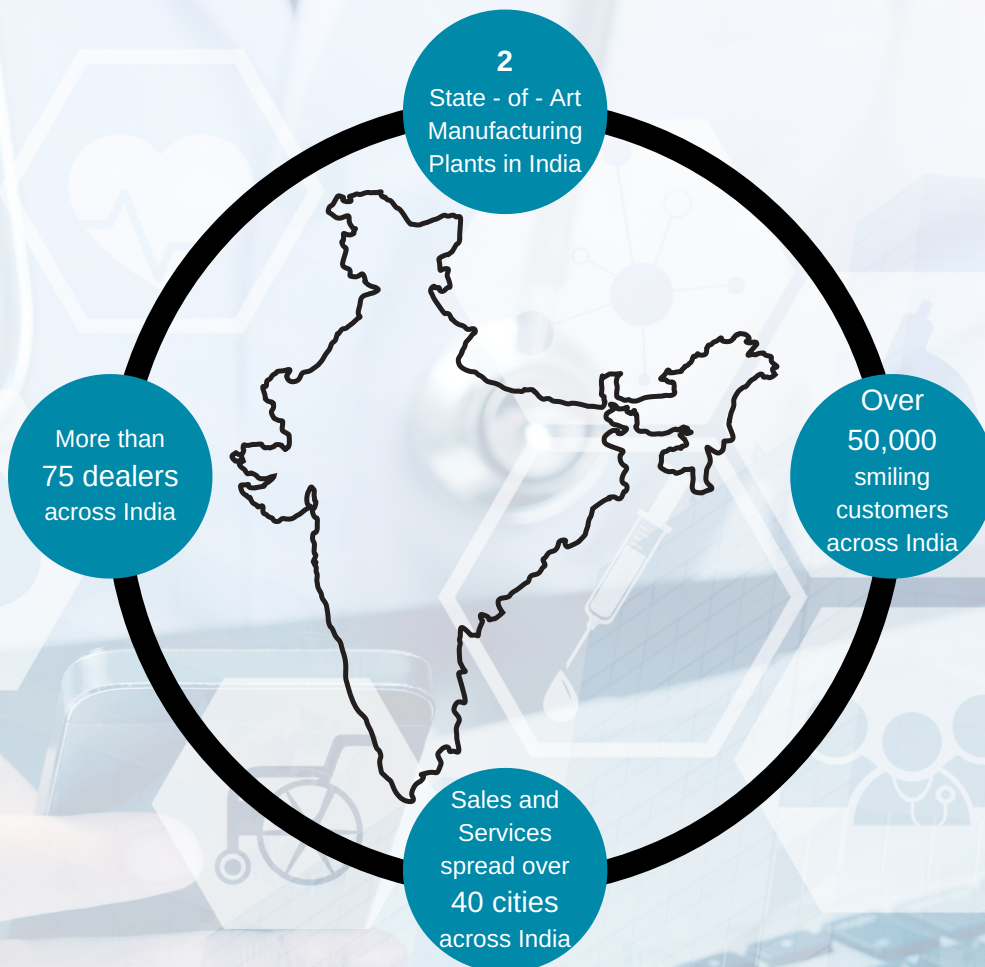
Note:- All BVLS Models with (A) are special package available with additional accessories (Silencer, Vacuum Switch, Vacuum gauge, Line Filter)

- In single stage configuration, 745mm (29"HG) vacuum at sea level can be achieved
- Supply options: Complete functional unit with Base mounted and Tank mounted options
- All performance parameters are as per JIS (Japanese Industrial Standards)

Disclaimer : - All pictures shown are for illustration purpose only. Actual product may vary due to continuous product enhancement.



## We are closer than you think!



Anest Iwata Motherson Pvt. Ltd.  
B-123 & 124, Sector-63, Noida - 201301,  
Distt. Gautam Budh Nagar, UP, India.  
Email: [anestiwata@aim.motherson.com](mailto:anestiwata@aim.motherson.com)  
Web: [www.aimcompressors.com](http://www.aimcompressors.com)



ISO-9001

For any details reach us at:

Head Office: +91-120-4600-500/510/511/512/518

North : +91-9910394044 +91-9871362399

East : +91-9899553261 +91-9990023423

West : +91-9899553276 +91-9899553648

South : +91-9902999322 +91-9940654560